

Contributors to this Issue:

Bob Brerton
Bob McLean
Bob Watkins



What's On When

Future Glasshouse Country Bromeliad Society Meetings
April 3rd. Mary McKillop Centre Beerwah 2.00. pm.
May 1st. Vanessa Pilarski's residence .Harold Place. Peachester 2.00.pm
June 4th Mary McKillop Centre Beerwah. 2.00.pm.

BROMELIAD SPECTACULAR

Proudly Presented by the Sunshine Coast Bromeliad Soc. Inc
SATURDAY 30TH APRIL 8.30--4.00PM
SUNDAY 1ST MAY 9.00--2.00PM

COMMUNITY HALL MILLWELL ROAD MAROOCHYDORE

Spectacular Display of Bromeliads

Plant Sales Monster Raffle

Refreshments Available

Bromeliad Workshop

Admission \$3.00 Children free
President Cheryl Basic Ph 5472 8827
Secretary Carol Stewart Ph 5445 3488

Rotary's Glasshouse Country Sustainability and Gardening Expo
Promoting **Environment Water Energy and Wellbeing** for you and your garden.
Beerwah Community Hall and Turner Park.
Sunday 29th May 2011
CONTACT Bob 0427 606 240

GOLD COAST SUCCULENT AND BROMELIAD SOCIETY INC.

Plant Sales and Display Day
Saturday 17th September. Carrara Community Centre.
Nielsen's Road Carrara.

For further information phone 07-55461161
or email- nja51@qld.chariot.net.au



Potting mix is still available in 25L bags for \$4.00. Contact Lou and Ardie Baker on 5494 8426



Glasshouse Country Bromeliad Society Newsletter

Volume 4 Issue 17

March-April 2011

Inside!

President's message 2

Thanks Paul and Margaret 3

Plant of the month for February 4

Plant of the month 2010 Winners and Place getters 5

Plant of the Month for March 6

Broms by Bob 7

What's on When 8



Greg Aizlewood was guest speaker at our February meeting. As usual his presentation regarding tillandsias and the plant stand he has developed was very well received. Greg and his wife Narelle kindly donated one of his stands to the club to be part of the major prize in the raffle we will be running at the upcoming sustainability and gardening expo in Beerwah on the 29th May.



Glasshouse Country Bromeliad Society would like to thank the State Member for Glasshouse **ANDREW POWELL MP.** for his assistance in the printing of this publication

Disclaimer:

This bi-monthly newsletter is intended to provide general information only for members of Glasshouse Country Bromeliad Society Inc. The producers and contributors will not be responsible for any loss or damage to property or injury to persons regarding the

Len's persuasive phone call on a Monday night hinted at writing a President's report in lieu of his absence from the March meeting. Hopefully details will be somewhat accurate.

Len wishes to apologise for not having Len's Timely Tips prepared for the newsletter.

I would like to thank Paul and Margaret for offering their residence for the March meeting. On behalf of the society, it was gratefully appreciated. Even though it was slightly wet underfoot, we all enjoyed the experience.

Members were reminded to supply two bromeliads for display on the 29 May if possible. Keep selling those raffle tickets as well! See Vanessa if there is a problem or you need more. The open garden day seems to be not viable as there is so much going on in at this time of the year. Bob might reluctantly have prepared a roster for the 29th May.

I spoke to Jo Allen, Tony Wright and Cheryl Basic to be guest speakers at the April meeting. Unfortunately Jo declined the offer for this year. Cheryl offered her services, but our meeting clashed with the Brisbane Bonanza being held on the same week- end. She is still a willing candidate for later on in the year. Hopefully she can give her talk on Life with Bromeliad: "How and when I started."

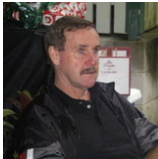
I'll try and present a small talk on Patterned Leaf Vrieseas at the April meeting.

Can't wait for the Waite's report and presentation on the ARAURA conference!

There are many bromeliad shows happening in the near future. Hope to see you at some.

Thanks

Bob Brereton (Vice President)



Management Committee Officers.

President: Len Waite

Vice President: Bob Brereton

Secretary: Pat Tennant

Treasurer: Geoff Tilton

Committee members:

Immediate past President, Media liaison & P.R. officer. Bob McLean

Newsletter Editor: Bob Watkins. Librarian: Vanessa Pilarski Raffles: K aye Notman

Plant of the Month: Ann Cormack Trip Coordinator Sheryl Waite

Catering Team Ardie Baker, Belinda Tilton.

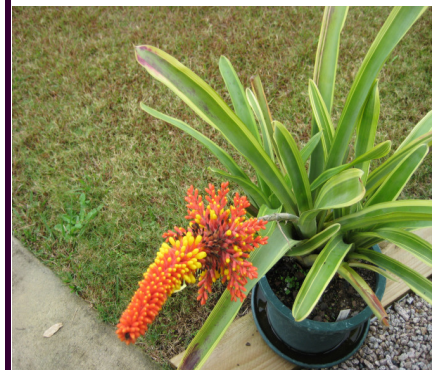
To Get In Touch: Phone Pat Tennant on 54941761 or Bob Watkins on 0418 782 538

Last time we spoke, we talked about Bromeliad Aechmea, In this issue we will continue looking at the Aechmea. These bromeliads lend themselves to cultivation more readily than other bromeliad and are therefore more widely grown and easily procurable. Over 304 species has been identified and probably the best-known would be Aechmea fasciata, which was introduced into cultivation in 1826, this was the species we spoke about last time. Aechmea are saxicolourous, terrestrial and epiphytic. The beauty of their foliage and long lasting inflorescence are a contributing factor to their popularity. Adaptability to house conditions, pot culture and their overall hardiness add to their appeal.

The varieties that are available are almost infinite and their shape, size and colour are extremely variable, from a few centimetres to about 3 meters in diameter. There is no plan to any one. Their genus may be plain green, maroon, rose, brown; striated and extremely ridged or delicately soft. They may be spaced out in open rosettes or tubular in form. The inflorescences after flowering holds a berry-like fruit, which is a distinguishing 'trademark' of the Aechmea genus. They grow in exposed conditions or full shade, on windswept mountains or forest floors. All do well in cultivation and very few require any special attention.

The Aechmea caudata is a species which has stiff grey-green leaves tinged with blue on the tips, which form a slender upright vase that can reach 1m tall. Reddish bracts and lime-yellow florets appear on a 1m tall, branched flower stem, giving the distinct impression from a distance that the flower spike is a deep orange. In full sun the leaves turn a golden green which can be quite attractive. It is very vigorous, so should be planted where it is can dominate an area without fear of overgrowing slower varieties. Irregular thick stripes of pale yellow or cream can arise on some offshoots, but this variegation is not stable from generation to generation. This is very hardy plant, able to withstand salt spray, frost and wind.

(Material sourced from growing bromeliads third edition by The Bromeliad Society of Australia Inc.)



Aechmea caudata



Plant of the Month—March

ADVANCED

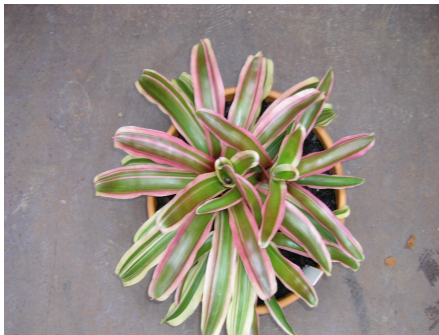


Lou Baker's Aechmea chantinii

NOVICE



1st Belinda Tilton's Vriesea June



2nd Vanessa Pilarski's Neoregelia meyerdorffii



3rd Pat Pennell's Vriesea Highway Beauty

Thanks Margaret and Paul

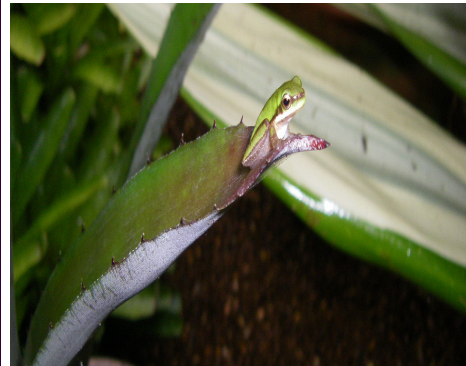


Paul Lancaster and Margaret Vita were our hosts for the March meeting at their Suncoast Water Gardens Nursery. A very enjoyable afternoon was had by members.

Paul gave a very informative talk on diseases facing the heliconia / ginger industry.

He also asked members to visit the web site gardenfreedom.com to enlighten themselves as to steps being undertaken by the Federal Attorney General to expand the list of federally prohibited plants and how it will affect EVERY aspect of the plant and gardening industry including you as a home gardener.

Thank you Paul and Margaret for taking the time to guide everyone around your property following the formal part of our meeting. A lot of development has taken place at your nursery since our last visit. All members offered positive responses to the improvements you have achieved



Editorial Committee : Bob Watkins, Pat Pennell

Any contributions can be emailed to :- bobwatkins69@yahoo.com.au

Plants of the Month - February

ADVANCED



1st

1st Sheryl Waite. *Tillandsia multicaulis*



2nd

2nd Len Waite. *Guzmania conifera*

NOVICE



1st

1st Ann Cormack *Vriesea correia - araujo*



2nd

2nd Belinda Tilton *Dykia*



3rd

3rd Bob McLean
Vriesea gruberi aspiniae

Advanced and Novice Plant of the month winners and place getters for 2010



Advanced Winners
Len and Sheryl Waite



Advanced Second Place
Lou Baker



Novice Winner
Bob McLean
Welcome to the big time Bob



Novice Equal Second
Pat Pennell



Novice Equal Second
Belinda Tilton