



**Office Bearers  
Contact Details**

**President:**

Godfrey Loughran  
sueloughran1@bigpond.com  
Phone: 4124 0543  
Mobile: 0416 783 773

**Vice President:**

John Casey  
jdc49@westnet.com.au  
Phone: 4125 5809  
Mobile: 0409 932 997

**Secretary:**

Sue Loughran  
sueloughran1@bigpond.com  
Phone: 4124 0543  
Mobile: 0414 757 162

**Treasurer:**

Janine Blaber  
janineblaber@gmail.com  
Mobile: 0413 571 620

**Editor: John Casey**

jdc49@westnet.com.au  
Phone: 4125 5809  
Mobile: 0409 932 997

**Purchasing Officer:**

Roger Robertson  
Phone: 4129 0444

**Committee Members:**

John Hoffmann  
Narelle Hoffmann  
Maxine O'Shea  
Nigel Thomson  
Roger Robertson

Hi everyone.

Another outstanding meeting last month, and thanks again to Burnice and Ian for opening their home at short notice. The weather actually stayed fine after quite a few rainy days leading up to it. Nigel gave a great talk on pollinating and hybridising, something he's been doing for many years, and I'm sure he inspired some members who may not have done it before to give it a try. There were many questions asked and answered, which is always a sign of a very interested audience.

**BUS TRIP**

The bus will be leaving this Saturday from outside the Chronicle Office in Central Plaza and those members going are requested to be there by 7.45. With stops organised at Ray and Del Gough's, Bundaberg Wholesale Palms And Plants, Janine Tyler's and Val Honeywood's it's going to be a great day. We will be stopping at the Brothers Leagues Club for lunch, where you can have a choice of a Chinese meal or eat in their Bistro. Because of space under the bus, as usual there will be a limit of two crates per person for your plants (unless you can stack them on top of each other of course). There will be a raffle held during the trip, so to make it a big fun one it would be great if everyone could bring a prize of some sort.

At the June meeting we will be holding our yearly BBQ lunch, and to enable catering to be properly organised it would be appreciated if you could advise Sue if you will be attending. We'd hate to be a few snags short and have someone miss out!! Don't forget that it will start at 11.00am instead of the usual 1.30pm, so don't be late. Those attending are reminded to bring their own cutlery and something to have a cuppa in.

At this meeting we will be holding our yearly raffle in aid of our sponsored charity, so if you can spare an extra prize or two it will be greatly appreciated.

Don't forget that we will be having a display at the Hervey Bay Botanic Gardens Open Day on Sunday the 27<sup>th</sup> from 9.00am to 2.00pm. It's a great chance to see this beautiful area and entry is free.

The committee have decided that while everyone is welcome to come to the Christmas luncheon, to be eligible for a subsidised meal you must have attended at least three meetings during the year.

## PLANT OF THE MONTH RESULTS FOR APRIL

**Any Genera other than Aechmea, Billbergia, Neoregelia, Tillandsia or Vriesea**

### *Open – Judge’s Choice – Nigel Thomson*

1. Hohenbergia Repton Crown – Ian Fluerty
2. Catopsis Berteroria – Val Honeywood
3. Hohenmea Ho Hum Derio x Karla – Val Honeywood

### *Member’s Choice*

1. Werauhia Sangria Rubra – Ian Fluerty
2. Orthophytum Selby – Goff Loughran
3. Catopsis Bert – Val Honeywood  
Quesnelia Tim Plowman – John Casey

### *Novice – Judge’s Choice – Nigel Thomson*

1. Cryptanthus Silver Zones – Sue Casey
2. Pitcairnia Smithiorium – David Ward

### *Member’s Choice*

1. Pitcairnia Smithiorium – David Ward
2. Cryptanthus Silver Zones – Sue Casey

## Plant Of The Month For June

### **A Variegated Neoregelia**

## DIARY DATES FOR 2018

**BYO chair, mug, plants you need help with, sales plants, plant of the month entries, and raffle donations to our meetings. Please note – meetings are on the fourth Saturday of the month, which may not always be the last Saturday.**

May 19 <sup>th</sup>	Bus trip to Bundaberg
June 23 <sup>rd</sup>	John & Narelle Hoffmann 287 John Street Maryborough
July 28 <sup>th</sup>	David & Lorraine Ward 9 Hanover Drive Urraween
August 25 <sup>th</sup>	Botanical Gardens Urrangan – Sausage Sizzle and Clean-up
September 22 <sup>nd</sup>	Carmel & Bruce Hodgins 25 Ramsay Court Dundathu
October 27 <sup>th</sup>	Ron & Elizabeth Southern 60 Serenity Drive Tinana

---

## HAPPY BIRTHDAY TO OUR MEMBERS FOR MAY

Danetta Achille  
Gail Grimsey  
Burnice Fluerty  
Narelle Hoffmann  
Hans Kruger  
Jason Pailthorpe

## **NOTES FROM THE COMMITTEE**

We are always trying to come up with new topics for the monthly meetings, and would really like your input to let us know what you are interested in. Would you like to give a talk on a particular aspect of the wonderful world of Broms that especially appeals to you? Do you have some that are maybe a bit different and quirky that you'd love to show off, or others that you're having problems with? Remember it's your club, and with your help it can only get bigger and better.

When you joined the club you were allocated a sellers number, and if you are selling plants it must be displayed on a yellow tag (available from Roger), so that Sue and Stewart know who to give the money from the sales to at the end of the day. Tags from sold plants will also be returned to you at the same time. If you don't know your number please ask the committee. If you are selling for the first time and don't have any tags there will be some available at the sales table to get you started.

Please remember that all sales start at 1.00 pm and finish at afternoon tea, plants travel much better in boxes or recyclable bags than plastic bags, and you can borrow books from our library for one month. If the book you want isn't available, please ask Rosie to put your name on the waiting list. If you can't return your books when they are due, please phone her on 4124 8658.

The monthly raffles are our main fundraiser for the year and it's great to see so many prizes donated by members. They don't have to be plants, but could be items to help in the garden or with potting and displaying your favourite Broms or anything else you think members will like. The only rule of thumb is would you be happy to win it.

### **OUR PRICE LIST EFFECTIVE JANUARY 2018**

125MM SQUAT POTS	\$2.90 for 10
140MM SQUAT POTS	\$3.75 for 10
165MM POTS	\$3.00 for 5
200MM POTS	\$3.50 for 5
HANGERS (4 PRONG)	\$3.00 for 10
SMALL WHITE LABELS	\$1.25 for 25
LARGE WHITE LABELS	\$2.00 for 25
YELLOW SALES LABELS	\$6.00 for 100
LABELLING PENCILS	\$3.60 each
CELLOPHANE SLEEVES FOR PUPS OR POTS	\$3.65 for pack of 50 (both sizes)
POTTING MIX	\$8.00 per bag
FERTILISER	\$2.75 for 500 grams

To make things easier for Roger, if you want to buy anything could you please phone him on 41290444 before the meeting day so he can have your items ready. That way sales will run a lot smoother and quicker.

---

## **BOTANIC GARDENS DAY 2018**

We have been invited to once again take part in this excellent day at the gardens in Elizabeth Street Urangan. Last year we had a stall and it generated quite a bit of interest, both in Bromeliads and our society as a whole.

It's a great day to see the gardens at their best, and look through the Orchid House. Unfortunately it coincides with some of the committee being away at another event, and we need some members to put their hands up to help man our stall and also sell some of your own plants if you choose. We have a couple of volunteers, but need at least two or three more to enable members to have a spell during the day. We also need people to bring along plants for display.

If you can help out please give your name to Sue.



### **BOTANIC GARDENS DAY**

With over 75 Botanic Gardens, Arboreta and Gardens taking part in 2017 we're expecting 2018 to be bigger and better.

Sunday, 27 May, 2018. Put it on your calendar!

Hervey Bay Botanic Gardens  
8.30am to set-up  
Open at 9am -2pm

The Hervey Bay Botanic Gardens and Orchid House team would like to invite your community gardening group to join us here at the Botanic gardens with a stall to promote your group and have an opportunity to sell some plants.

There will be no entry fee charged, all we ask is for each stall to donate a lucky door prize to add to the fun. We will have a volunteer food tent with morning tea, lunch and refreshments for sale. The profits from this will be donated one of the stall organizations and will be drawn out at the end of the day.

- Lucky Door Prizes
- Bush Tucker, CEP Nursery, Orchid Nursery & Botanic Garden Tours
  - Orchid Potting and Bush Tucker Demo's
  - Children's activities

We will be promoting this event through media and are planning for it to be better than ever.

RSVP to book a stall by May 1  
Vicky Riley  
Team Leader Horticulture  
Development & Community

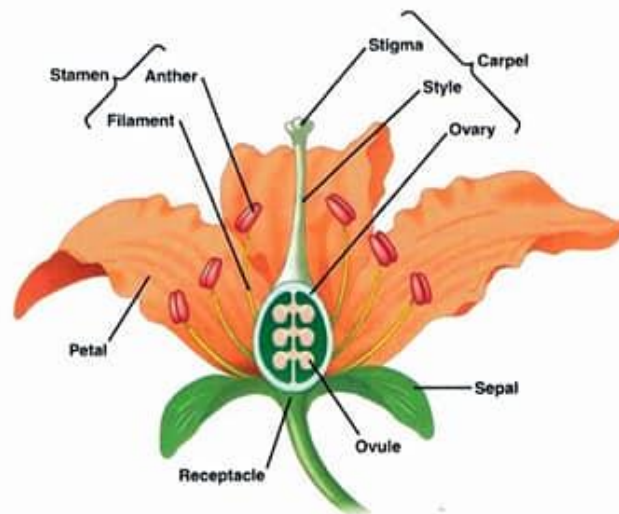
## Bromeliads Pollination, Hybridisation and growing from seed

### Pollination

Pollination is not difficult with most bromeliads, timing is important as the reproductive organs of a flower have a short time frame to be reactive to accepting the pollen. Each species is different. I find about 9am to 10am is about the best time for Neoregelias, by 11am the plant may no longer be receptive (I find neo's are the trickiest to pollinate), Aechmeas can remain receptive for days, Vriesea may flower and be receptive through the night and finished by the morning. I have spent many nights in the shade house with a torch held in my mouth pollinating Vriesea flowers.

The anthers in the flower hold the pollen, as the pollen on the anthers ripen and is ready for pollen extraction they start to expand and fluff out, then you need to find a bromeliad with a receptive stigma in the flower, when the stigma is receptive drops of sticky nectar can be seen.

Pollen can be stored in the refrigerator until a receptive mate is ready.



The Bromeliad where the pollen was collected from the anthers is called the pollen parent it is always classed second in the naming of the seedlings. Example (Mactiger)

The Bromeliad excepting the pollen on the stigma is called the seed parent and is always classed first when naming seedlings. Example (Persian carpet) = Persian Carpet x Mactiger

- Where a bromeliad is pollinated with its own pollen to the stigma it is called selfing
- Seedling from selfings will have an F2 after the chosen seedling name  
= Persian Carpet F2

I love a challenge and have pollinated many Neoregelias successfully. I use a clean toothpick to tease the anthers, twisting until enough pollen is collected, then I move to the receptive stigma, lining up the center of the flower gently push the toothpick into the flower giving a gentle turn to release the pollen.

Seeds can take about 2 months to mature and ripen.

It is important when selecting healthy parent plants that they have strong desirable features that you would like to produce into your seedlings. If your plants are sick, seedlings can inherit viruses through the seed.

Through experience I have found Albo Marginated plants used as the seed parent produce white pups that cannot photosynthesize and die at a very young age.

The best parent plants to produce variegation are nicely striated plants crossed with solid coloured plants.

Vreiseas, Aechmeas and Tillandsias are much easier to pollinate as the stigma is not hidden, use the same principle as above. It may be easier to remove the whole flower with the anthers and push into the flower with the exposed stigma.

Seedlings can be variable and very seldom the same as the parents, this is where new hybrids are born. Not always are the results of hybridization an improvement over the parents used, but in most instances they will give the hybridizer an interesting new combination of characters quite worthwhile. New Hybrids are rarely registered until they have matured, flowered and pupped themselves, this way the hybridizer is able to see if the plant is stable before making available to the public.

### Seedlings

1. When the seed is ripe it is swollen and starts to change colour
2. Prepare your seedling media. I like to use 140ml squat pots or trays. I prefer a seed growing mix or sphagnum moss
3. It's important at this stage that everything used is sterile, otherwise you will lose the batch of seedlings to infection. Wet your mix before seeding.
4. Gently squeeze the seed from the pod onto the media, careful not to contaminate the seeds with your fingers. I don't cover the seed with media
5. Place your pots with seeds into a large plastic ziplock bag and seal, or trays covered in clingwrap. This will be there home for the next 4 months
6. Growing from seed is a slow, long process but very rewarding when you establish your own hybrids.
7. Once the seedlings are very full in the pot and are of large size it's time to separate carefully planting into their own pots
8. As your seedlings mature be prepared to cull heavily, keeping only the best of your hybrids.



***Experiment a lot and have fun***

**Julie Barry**  
*Diploma Horticulture*